



PUTTERILLS

est. 1992

**£1,100 PCM**  
**Wadnall Way**  
Knebworth, SG3 6DX



## PROPERTY SUMMARY

This immaculate, beautifully presented 1 bedroom maisonette is situated in a well-regarded development built by Rialto Homes, and is within easy reach of the village high street and mainline rail link to London Kings Cross. The property boasts its own private entrance with accommodation comprising: Lobby with storage cupboard, stairs to first floor, bright lounge, recently refitted modern kitchen, bathroom and generous double bedroom with built in cupboards. There is an allocated parking space to the rear Energy Rating: C

1



1



1





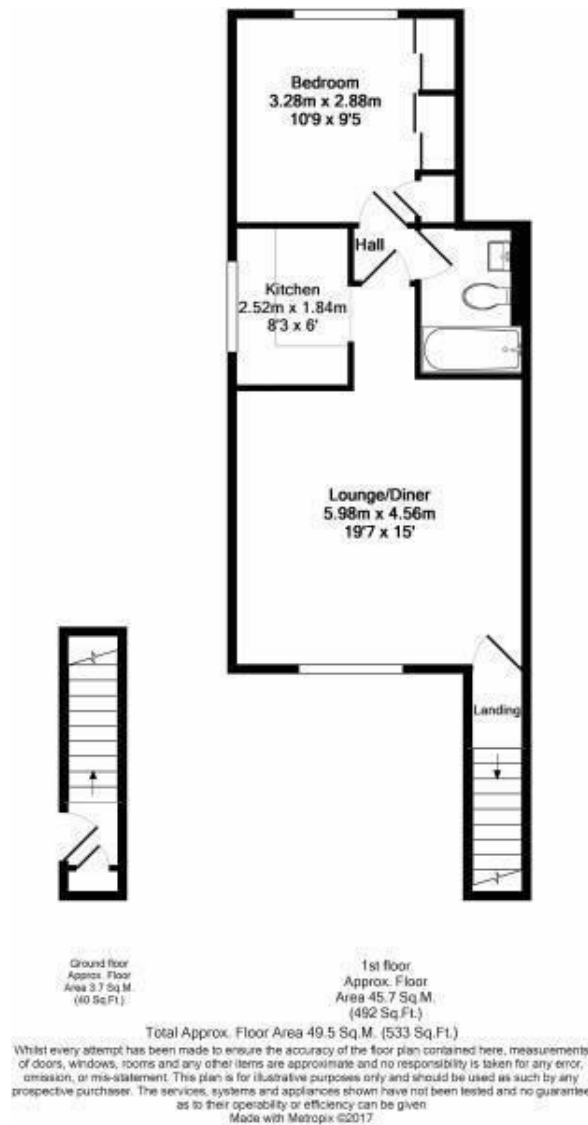


PUTTERILLS  
LETTINGS

est. 1992







## LOCAL AUTHORITY

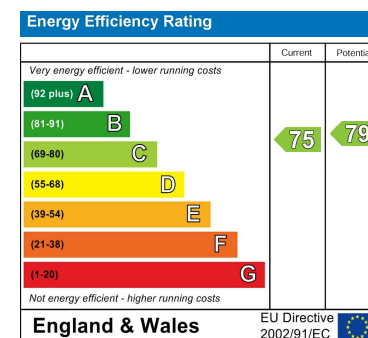
## TENURE

## COUNCIL TAX BAND

B

## VIEWINGS

By prior appointment only



Agents Note: Whilst every care has been taken to prepare these particulars, they are for guidance purposes only. All measurements are approximate and are for general guidance purposes only and whilst every care has been taken to ensure their accuracy, they should not be relied upon and potential buyers/tenants are advised to recheck the measurements



## OFFICE ADDRESS

Putterills Lettings  
123 London Road  
Knebworth  
SG3 6EX

## OFFICE DETAILS

01462 419333  
lettings@putterills.co.uk  
www.putterills.co.uk